



122-B

## **CERTIFICATION REPORT No. CRP250**

# **Oracle Business Intelligence Enterprise Edition (OBIEE) Version 10.1.3.3.2 with Quick Fix 090406 running on Oracle Enterprise Linux 4 update 5 x86\_64**

Issue 1.0

June 2009

© Crown Copyright 2009 – All Rights Reserved

Reproduction is authorised, provided  
that this report is copied in its entirety.

**CESG Certification Body**  
IACS Delivery Office, CESG  
Hubble Road, Cheltenham  
Gloucestershire, GL51 0EX  
United Kingdom

## CERTIFICATION STATEMENT

The product detailed below has been evaluated under the terms of the UK IT Security Evaluation and Certification Scheme and has met the specified Common Criteria requirements. The scope of the evaluation and the assumed usage environment are specified in the body of this report.	
Sponsor:	Oracle Corporation
Developer:	Oracle Corporation
Product and Version:	Oracle Business Intelligence Enterprise Edition (OBIEE) Version 10.1.3.3.2 with Quick Fix 090406
Platform:	Oracle Enterprise Linux (OEL) version 4 update 5 x86_64
Description:	Oracle Business Intelligence Enterprise Edition (OBIEE) is a suite of products that allow enterprises to securely manage, report on and present access to their resources and assets via a single common business model. It provides users with secure, fine-grained access to enterprise resources and assets.
CC Part 2:	Extended
CC Part 3:	Conformant
EAL:	EAL3
SoF:	N/A
PP Conformance:	N/A
CLEF:	Logica UK Limited
CC Certificate:	CRP250
Date Certified:	19 June 2009
<p>The evaluation was performed in accordance with the requirements of the UK IT Security Evaluation and Certification Scheme as described in UK Scheme Publication 01 [UKSP01] and 02 [UKSP02P1], [UKSP02P2]. The Scheme has established a Certification Body, which is managed by CESG on behalf of Her Majesty's Government.</p> <p>The purpose of the evaluation was to provide assurance about the effectiveness of the TOE in meeting its Security Target [ST], which prospective consumers are advised to read. To ensure that the Security Target gave an appropriate baseline for a CC evaluation, it was first itself evaluated. The TOE was then evaluated against this baseline. Both parts of the evaluation were performed in accordance with CC Part 1 [CC1] and 3 [CC3], the Common Evaluation Methodology [CEM] and relevant Interpretations.</p> <p>The issue of a Certification Report is a confirmation that the evaluation process has been performed properly and that no <i>exploitable</i> vulnerabilities have been found in the evaluated configuration of the TOE. It is not an endorsement of the product.</p>	

### ARRANGEMENT ON THE RECOGNITION OF COMMON CRITERIA CERTIFICATES IN THE FIELD OF INFORMATION TECHNOLOGY SECURITY

The Certification Body of the UK IT Security Evaluation and Certification Scheme is a member of the above Arrangement [CCRA] and, as such, this confirms that the Common Criteria certificate has been issued by or under the authority of a Party to this Arrangement and is the Party's claim that the certificate has been issued in accordance with the terms of this Arrangement.

The judgements<sup>1</sup> contained in the certificate and in this report are those of the Qualified Certification Body which issued them and of the Evaluation Facility which performed the evaluation. There is no implication of acceptance by other Members of the Arrangement Group of liability in respect of those judgements or for loss sustained as a result of reliance placed by a third party upon those judgements.

### MUTUAL RECOGNITION AGREEMENT OF INFORMATION TECHNOLOGY SECURITY EVALUATION CERTIFICATES

The SOG-IS MRA logo which appears below:

- confirms that the certificate has been issued under the authority of a party to an international Mutual Recognition Agreement (MRA) [MRA] designed to ensure that security evaluations are performed to high and consistent standards;
- indicates that it is the claim of the evaluating party that its evaluation and certification processes meet all the conditions of the MRA.

The judgements<sup>1</sup> contained in the certificate and in this report are those of the Qualified Certification Body which issued them and of the Evaluation Facility which performed the evaluation. Use of the logo of this Agreement does not imply acceptance by other Members of liability in respect of those judgements or for loss sustained as a result of reliance placed by a third party upon those judgements.



<sup>1</sup> All judgements contained in this Certification Report are covered by the CCRA [CCRA] and the MRA [MRA].



## TABLE OF CONTENTS

<b>CERTIFICATION STATEMENT .....</b>	<b>2</b>
<b>TABLE OF CONTENTS .....</b>	<b>3</b>
<b>I. EXECUTIVE SUMMARY .....</b>	<b>4</b>
Introduction.....	4
Evaluated Product and TOE Scope .....	4
Protection Profile Conformance.....	4
Security Claims .....	4
Evaluation Conduct.....	5
Conclusions and Recommendations .....	5
Disclaimers .....	5
<b>II. TOE SECURITY GUIDANCE.....</b>	<b>7</b>
Introduction.....	7
Delivery.....	7
Installation and Guidance Documentation .....	7
<b>III. EVALUATED CONFIGURATION .....</b>	<b>8</b>
TOE Identification .....	8
TOE Documentation .....	8
TOE Scope .....	8
TOE Configuration .....	8
Environmental Requirements.....	8
Test Configuration .....	9
<b>IV. PRODUCT ARCHITECTURE.....</b>	<b>11</b>
Introduction.....	11
Product Description and Architecture.....	11
TOE Design Subsystems.....	12
TOE Dependencies .....	13
TOE Interfaces .....	13
<b>V. TOE TESTING .....</b>	<b>14</b>
TOE Testing.....	14
Vulnerability Analysis .....	14
Platform Issues.....	14
<b>VI. REFERENCES.....</b>	<b>15</b>
<b>VII. ABBREVIATIONS.....</b>	<b>17</b>

## I. EXECUTIVE SUMMARY

### Introduction

1. This Certification Report states the outcome of the Common Criteria (CC) security evaluation of Oracle Business Intelligence Enterprise Edition (OBIEE) Version 10.1.3.3.2 with Quick Fix 090406 to the Sponsor, Oracle Corporation, as summarised on page 2 ‘Certification Statement’ of this report, and is intended to assist prospective consumers when judging the suitability of the IT security of the product for their particular requirements.
2. Prospective consumers are advised to read this report in conjunction with the Security Target [ST], which specifies the functional, environmental and assurance requirements.

### Evaluated Product and TOE Scope

3. The following product completed evaluation to CC **EAL3** on 19 June 2009:
  - Oracle Business Intelligence Enterprise Edition Version 10.1.3.3.2 with Quick Fix 090406 running on Oracle Enterprise Linux version 4 update 5 x86\_64.
4. The Developer was Oracle Corporation.
5. The evaluated configuration of this product is described in this report as the Target of Evaluation (TOE). Details of the TOE Scope, its assumed environment and the evaluated configuration are given in Chapter III ‘Evaluated Configuration’ of this report.
6. An overview of the TOE and its product architecture can be found in Chapter IV ‘Product Architecture’ of this report. Configuration requirements are specified in Section 2 of [ST].

### Protection Profile Conformance

7. The Security Target [ST] does not claim conformance to any protection profile.

### Security Claims

8. The Security Target [ST] fully specifies the TOE’s Security Objectives, the Threats which these Objectives counter and the Security Functional Requirements (SFRs) that refine the Objectives. All of the SFRs are taken from CC Part 2 [CC2]; use of this standard facilitates comparison with other evaluated products.
9. The TOE security policies are detailed in ST [ST]. There are no Organisational Security Policies (OSPs) specified in ST [ST].
10. The environmental assumptions related to the operating environment are detailed in Chapter III (in ‘Environmental Requirements’) of this report.

## **Evaluation Conduct**

11. The Certification Body monitored the evaluation which was performed by the Logica Commercial Evaluation Facility (CLEF). The evaluation addressed the requirements specified in the Security Target [ST]. The results of this work, completed in May 2009, were reported in the Evaluation Technical Reports [ETR1], [ETR2] and [ETR3].

## **Conclusions and Recommendations**

12. The conclusions of the Certification Body are summarised on page 2 ‘Certification Statement’ of this report.
13. Prospective consumers of Oracle Business Intelligence Enterprise Edition Version 10.1.3.3.2 with Quick Fix 090406 should understand the specific scope of the certification by reading this report in conjunction with the Security Target [ST]. The TOE should be used in accordance with the environmental assumptions specified in the Security Target. Prospective consumers are advised to check that the SFRs and the evaluated configuration match their identified requirements, and to give due consideration to the recommendations and caveats of this report.
14. The TOE should be used in accordance with the supporting guidance documentation included in the evaluated configuration. Chapter II ‘TOE Security Guidance’ of this report includes a number of recommendations regarding the secure receipt, installation, configuration and operation of the TOE.
15. In addition, the Evaluators’ comments and recommendations are as follows:
  - There are no specific comments or recommendations for the TOE consumer. Note that six Level 4 Observation Reports remain outstanding, for resolution by the Developer in future versions of this product. However, most of the associated risks are adequately mitigated by following the Evaluated Configuration Guide [ECG].

## **Disclaimers**

16. This report is only valid for the evaluated TOE. This is specified in Chapter III ‘Evaluated Configuration’ of this report.
17. Certification is *not* a guarantee of freedom from security vulnerabilities. There remains a small probability (smaller with higher Evaluation Assurance Levels) that exploitable vulnerabilities may be discovered after an evaluation has been completed. This report reflects the Certification Body’s view at the time of certification.
18. Existing and prospective consumers should check regularly for themselves whether any security vulnerabilities have been discovered since the final ETR was issued and, if appropriate, should check with the Vendor to see if any patches exist for the product and whether those patches have further assurance.



19. The installation of patches for security vulnerabilities, whether or not those patches have further assurance, should improve the security of the TOE. However, note that unevaluated patching will invalidate the certification of the TOE, unless the TOE has undergone a formal re-certification or is covered under an approved Assurance Continuity process by a CCRA certificate-authorising Scheme.
20. All product or company names used in this report are for identification purposes only and may be trademarks of their respective owners.



## **II. TOE SECURITY GUIDANCE**

### **Introduction**

21. The following sections provide guidance that is of particular relevance to purchasers of the TOE.

### **Delivery**

22. On receipt of the TOE, the consumer is recommended to check that the evaluated version has been supplied from an authentic source and the security of the TOE has not been compromised (e.g. by tampering) during delivery.
23. Section 2 of the [ECG] lists all components that constitute the TOE, including specific CD part numbers.

### **Installation and Guidance Documentation**

24. The Installation and Secure Configuration documentation is as follows:
  - [ECG] Evaluated Configuration Document – Provides guidance to administrators for the security of the TOE and its environment.
25. The Evaluated Configuration Document [ECG] is released by Oracle to consumers on request. It is anticipated that Oracle may also make the document available for download from one of its websites, for example via:

<http://www.oracle.com/technology/deploy/security/seceval/oracle-common-criteria-evaluated.html>

26. The User Guide and Administration Guide documentation is as follows:
  - [ECG] Evaluated Configuration Document
  - [AG\_BIPS] OBI Presentation Services Administration Guide
  - [AG\_WS] OBI Web Services Guide
  - [AG\_BIS] OBI Server Administration Guide



### III. EVALUATED CONFIGURATION

#### TOE Identification

27. The TOE is Oracle Business Intelligence Enterprise Edition Version 10.1.3.3.2 with Quick Fix 090406, which consists of:

- Oracle Web Services (10.1.3.3.2),
- Oracle BI Java Host (10.1.3.3.2),
- Oracle BI Answers (10.1.3.3.2),
- Oracle BI Server (10.1.3.3.2) with Quick Fix 090406, and
- Oracle BI Presentation Services (10.1.3.3.2) with Quick Fix 090406.

#### TOE Documentation

28. The relevant guidance documentation for the evaluated configuration is identified in Chapter II (in 'Installation and Guidance Documentation') of this report.

#### TOE Scope

29. The TOE Scope is defined in the Security Target [ST] Section 2. Functionality that is outside the TOE Scope is also defined in [ST] Section 2.

#### TOE Configuration

30. The evaluated configuration of the TOE is defined in [ECG] Section 2.

#### Environmental Requirements

31. The environmental assumptions for the TOE are stated in [ST] Section 3.

32. The TOE was evaluated running on Oracle Enterprise Linux 4 Update 5 x86\_64.

33. The TOE has software dependencies, in that it relies on the host operating system, database server, web server, internet directory to:

a. Protect the TOE's security features that are within the scope of its evaluation and certification, including its:

- i. user identification and authentication;
- ii. resource access control;
- iii. security attribute maintenance;
- iv. audit and accountability.

b. Protect the TOE from being bypassed, tampered with, misused or directly attacked.



34. Hence the security of the TOE depends not only on secure administration of the TOE, but also on secure administration of the host operating system, database server, internet directory and web server in secure configurations using the TOE.

**Test Configuration**

35. The Developers used the following configuration for their testing:

Machine No	1	2	3	4	5	6	7
<b>Machine name</b>	Dell Optiplex 745 MT	Dell Optiplex 745 MT	Dell Optiplex 745 MT	Dell Optiplex 745 MT	Dell Optiplex 745 MT	Dell Optiplex 745 MT	Dell Optiplex 745 MT
<b>Processor</b>	Core 2 Duo E6400	Core 2 Duo E6400	Core 2 Duo E6400	Core 2 Duo E6400	Core 2 Duo E6400	Core 2 Duo E6400	Core 2 Duo E6400
<b>CPU speed</b>	2.13 GHz	2.13 GHz	2.13 GHz	2.13 GHz	2.13 GHz	2.13 GHz	2.13 GHz
<b>Memory</b>	1 GB	1 GB	1 GB	1 GB	1 GB	1 GB	1 GB
<b>Operating System</b>	Oracle Enterprise Linux 4 Update 5 x86_64	Oracle Enterprise Linux 4 Update 5 x86_64	Oracle Enterprise Linux 4 Update 5 x86_64	Oracle Enterprise Linux 4 Update 5 x86_64	Oracle Enterprise Linux 4 Update 5 x86_64	Windows XP	Oracle Enterprise Linux 4 Update 5 x86_64
<b>Drives</b>	160 GB	160 GB	160 GB	160 GB	160 GB	160 GB	160 GB
<b>Products Installed</b>	<u>Used as Primary OBIEE server</u> - Oracle Application Server 10g Release 3 (10.1.3.1.0) - Oracle Client 10g Release 2 (10.2.0.3.0) - Oracle Business Intelligence Enterprise Edition (10.1.3.3.2)	<u>Used as Secondary OBIEE Server</u> - Oracle Application Server 10g Release 3 (10.1.3.1.0) - Oracle Client 10g Release 2 (10.2.0.3.0) - Oracle Business Intelligence Enterprise Edition (10.1.3.3.2)	<u>Database server</u> - Oracle Database 10g Release 2 (10.2.0.3.0)	<u>LDAP server</u> - Oracle Internet Directory 10g (10.1.4.0.1)	<u>Web server</u> - Oracle Application Server 10g Release 3 (10.1.3.1.0) - Oracle HTTP Server 10g (10.1.2.0.2) - Oracle Business Intelligence Enterprise Edition Services Plug-In (10.1.3.3.2)	<u>OBIEE Admin tools</u> - Oracle Application Server 10g Release 3 (10.1.3.1.0) - Oracle Business Intelligence Enterprise Edition Client Tools (10.1.3.3.2)	N/A used as Network File System (NFS)

**Table 1 – Environmental Configuration (Developer’s tests)**

36. The Evaluators used the following configuration for their testing:

Machine No	Host Machine 1			Host Machine 2			
Machine name	Dell Optiplex 745 MT			Dell Optiplex 745 MT			
Processor	Core 2 Duo E6400			Core 2 Duo E6400			
CPU speed	2.13 GHz			2.13 GHz			
Memory	1 GB			1 GB			
Host Machine OS	Oracle Enterprise Linux 4 Update 5 x86_64			Oracle Enterprise Linux 4 Update 5 x86_64			
Virtual Machine ID	VM1	VM2	VM3	VM4	VM5	VM6	VM7
Operating System	Oracle Enterprise Linux 4 Update 5 x86_64	Oracle Enterprise Linux 4 Update 5 x86_64	Oracle Enterprise Linux 4 Update 5 x86_64	Oracle Enterprise Linux 4 Update 5 x86_64	Oracle Enterprise Linux 4 Update 5 x86_64	Windows XP	Oracle Enterprise Linux 4 Update 5 x86_64
Drives	160 GB	160 GB	160 GB	160 GB	160 GB	160 GB	160 GB
Products Installed	<u>Used as Primary OBIEE server</u> - Oracle Application Server 10g Release 3 (10.1.3.1.0) - Oracle Client 10g Release 2 (10.2.0.3.0) - Oracle Business Intelligence Enterprise Edition (10.1.3.3.2)	<u>Used as Secondary OBIEE Server</u> - Oracle Application Server 10g Release 3 (10.1.3.1.0) - Oracle Client 10g Release 2 (10.2.0.3.0) - Oracle Business Intelligence Enterprise Edition (10.1.3.3.2)	<u>Database server</u> - Oracle Database 10g Release 2 (10.2.0.3.0)	<u>LDAP server</u> - Oracle Internet Directory 10g (10.1.4.0.1)	<u>Web server</u> - Oracle Application Server 10g Release 3 (10.1.3.1.0) - Oracle HTTP Server 10g (10.1.2.0.2) - Oracle Business Intelligence Enterprise Edition Services Plug-In (10.1.3.3.2)	<u>OBIEE Admin tools</u> - Oracle Application Server 10g Release 3 (10.1.3.1.0) - Oracle Business Intelligence Enterprise Edition Client Tools (10.1.3.3.2)	N/A used as Network File System (NFS)

Table 2 – Environmental Configuration (Evaluators’ tests)

37. Further details of the Developer’s testing and Evaluators’ testing are given in Chapter V.

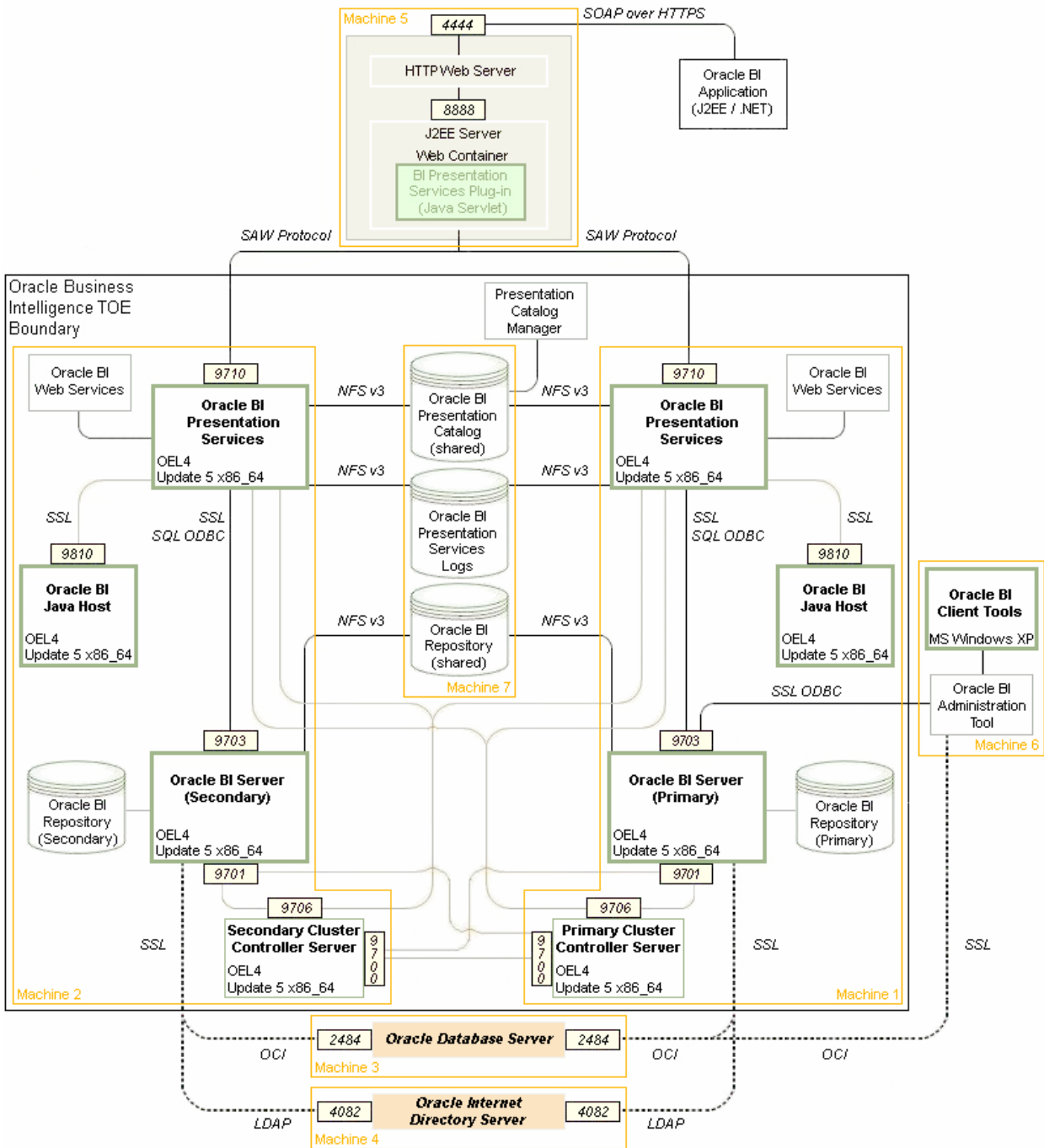
## **IV. PRODUCT ARCHITECTURE**

### **Introduction**

38. This Chapter gives an overview of the main TOE architectural features. Other details of the scope of evaluation are given in Chapter III ‘Evaluated Configuration’ of this report.

### **Product Description and Architecture**

39. Oracle Business Intelligence Enterprise Edition is a suite of products that allow enterprises to manage, report on and present access to their data via a single common business model.
40. For this evaluation of Oracle Business Intelligence Enterprise Edition, the products that are in the Target of Evaluation are Oracle Web Services (10.1.3.3.2), Oracle BI Presentation Services (10.1.3.3.2) with Quick Fix 090406, Oracle BI Java Host (10.1.3.3.2), Oracle BI Answers (10.1.3.3.2) and Oracle BI Server (10.1.3.3.2) with Quick Fix 090406.
41. The following diagram details the product architecture where the numbers are port numbers.



### TOE Design Subsystems

42. The TOE subsystems, and their security features/functionality, are as follows:

- The user interface to the TOE is Oracle BI Web Services via Simple Object Access Protocol (SOAP) and Hypertext Transfer Protocol Secure (HTTPS). Oracle BI Web Services is an Application Programming Interface (API) that implements SOAP.

- Presentation Services provides an authenticated user with access to Requests. These deliver reports back in HTML format. If a user has sufficient privilege they may also send logical queries. Requests are subject to access controls. Users will only be able to execute requests for which they are authorised.
- BI Server is the command centre for Oracle BIEE controlling authentication, user accountability, access to the business model, and access to the back end Oracle Database Management System that stores the physical database tables. Administrators use this to define and partition the organisational business model to give users the access to the parts of the business model required for their role.

### **TOE Dependencies**

43. The TOE has no hardware or firmware dependencies.

### **TOE Interfaces**

44. The external TOE Security Functions Interface (TSFI) is described as follows:
- All user requests for authentication are received by the Web Services through the Presentation Services and passed to the BI Server. This in turn passes authentication through to one of two entities. The BI Server either submits the username and password pair directly to the database to perform authentication or it hands off the authentication to OID which then decides whether the user is permitted access or not.
  - Oracle BIEE stores the accounting log in the backend database, which can then be queried by Administrators like any other data object. The level of logging is configurable.
  - HTTPS (implemented using OpenSSL version 0.9.8.j) is used internally to protect user credentials from unauthorised access; and also externally in communication with user applications using the Web Services via the Oracle Web server. Oracle Advanced Security Option is used to encrypt communications with the back end database.

## V. TOE TESTING

### TOE Testing

45. The Developer's tests covered:
  - all SFRs;
  - all TOE high-level subsystems, as identified in Chapter IV (in 'TOE Design Subsystems') of this report;
  - the TSFI, as identified in Chapter IV (in 'TOE Interfaces') of this report.
46. The Developer's tests also included those TOE interfaces which are internal to the product and thus had to be exercised indirectly.
47. The Developer installed and tested the TOE on the platforms specified in Table 1.
48. The Evaluators devised and ran a total of 14 independent functional tests, different from those performed by the Developer. No anomalies were found.
49. The Evaluators also devised and ran a total of 7 penetration tests to address potential vulnerabilities considered during the evaluation. No exploitable vulnerabilities or errors were detected.
50. The Evaluators installed the TOE and performed their independent functional tests and penetrations tests, as well as various platform dependency tests, on the platforms and configurations specified in Table 2.
51. The Evaluators finished running their penetration tests in May 2009.

### Vulnerability Analysis

52. The Evaluators' vulnerability analysis, which preceded penetration testing and was reported in [ETR3], was based on public domain sources and the visibility of the TOE provided by the evaluation deliverables, in particular the developer's design documents and the [ECG].

### Platform Issues

53. The Developer's provided a Platform Rationale which provided reasoning why the security of the TOE is not undermined by the underlying platforms. The evaluators analysed the Rationale and performed various tests against the underlying OS, database, LDAP platform, OC4J platform and virtual workstation. The Evaluators confirmed that each underlying platform does not undermine the security of the TOE.

## **VI. REFERENCES**

- [AG\_BIPS] Oracle Business Intelligence Presentation Services Administration Guide, Version 10.1.3.2, Part Number: B31766-01, December 2006.
- [AG\_WS] Oracle Business Intelligence Web Services Guide, Version 10.1.3.2, Part Number: B31769-01, December 2006.
- [AG\_BIS] Oracle Business Intelligence Server Guide, Version 10.1.3.2, Part Number: B31770-01, December 2006.
- [CC] Common Criteria for Information Technology Security Evaluation, (comprising Parts 1, 2, 3: [CC1], [CC2], [CC3]).
- [CC1] Common Criteria for Information Technology Security Evaluation, Part 1, Introduction and General Model, Common Criteria Maintenance Board, CCMB-2006-09-001, Version 3.1 R1, September 2006.
- [CC2] Common Criteria for Information Technology Security Evaluation, Part 2, Security Functional Requirements, Common Criteria Maintenance Board, CCMB-2007-09-002, Version 3.1 R2, September 2007.
- [CC3] Common Criteria for Information Technology Security Evaluation, Part 3, Security Assurance Requirements, Common Criteria Maintenance Board, CCMB-2007-09-003, Version 3.1 R2, September 2007.
- [CCRA] Arrangement on the Recognition of Common Criteria Certificates in the Field of Information Technology Security, Participants in the Arrangement Group, May 2000.
- [CEM] Common Methodology for Information Technology Security Evaluation, Evaluation Methodology, Common Criteria Maintenance Board, CCMB-2007-09-004, Version 3.1 R2, September 2007.
- [ECG] Evaluated Configuration Guide for Oracle Business Intelligence Enterprise Edition (10.1.3.3.2) with Quick Fix 090406, Version 1.0, 2 June 2009.

- [ETR1] LFL/T256 Evaluation Technical Report 1,  
Evaluation of Oracle Business Intelligence Enterprise Edition (10.1.3.3.2),  
Logica CLEF,  
LFL/T256/ETR1, Issue 0.2, 25 July 2008
- [ETR2] LFL/T256 Evaluation Technical Report 2,  
Evaluation of Oracle Business Intelligence Enterprise Edition (10.1.3.3.2),  
Logica CLEF,  
LFL/T256/ETR2, Issue 1.0, 17 September 2008
- [ETR3] LFL/T256 Evaluation Technical Report 3,  
Evaluation of Oracle Business Intelligence Enterprise Edition (10.1.3.3.2) with  
Quick Fix 090406,  
Logica CLEF,  
LFL/T256/ETR3, Issue 1.0, 8 June 2009.
- [MRA] Mutual Recognition Agreement of Information Technology Security  
Evaluation Certificates,  
Management Committee of Agreement Group,  
Senior Officials Group – Information Systems Security,  
Version 2.0, April 1999.
- [ST] Security Target for Oracle Business Intelligence Enterprise Edition (10.1.3.3.2)  
with Quick Fix 090406,  
Oracle Corporation,  
Issue 1.7, 22 June 2009.
- [UKSP00] Abbreviations and References,  
UK IT Security Evaluation and Certification Scheme,  
UKSP 00, Issue 1.5, October 2008.
- [UKSP01] Description of the Scheme,  
UK IT Security Evaluation and Certification Scheme,  
UKSP 01, Issue 6.2, October 2008.
- [UKSP02P1] CLEF Requirements - Startup and Operations,  
UK IT Security Evaluation and Certification Scheme,  
UKSP 02: Part I, Issue 4.1, October 2008.
- [UKSP02P2] CLEF Requirements - Conduct of an Evaluation,  
UK IT Security Evaluation and Certification Scheme,  
UKSP 02: Part II, Issue 2.3, October 2008.



## **VII. ABBREVIATIONS**

This list of abbreviations is specific to the TOE. It therefore excludes: general IT abbreviations (e.g. GUI, HTML, LAN, PC); standard CC abbreviations (e.g. TOE, TSF) covered in CC Part 1 [CC1]; and UK Scheme abbreviations (e.g. CESG, CLEF) covered in [UKSP00].

BI	Business Intelligence
OEL	Oracle Enterprise Linux
OBIEE	Oracle Business Intelligence Enterprise Edition
OBI	Oracle Business Intelligence
OID	Oracle Internet Directory
OS	Operating System
OC4J	Oracle Containers for Java
LDAP	Lightweight Directory Access Protocol



*This page is intentionally blank.*